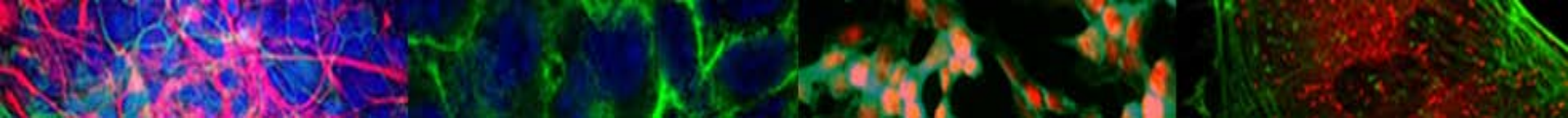


SC EPSCoR/IDeA

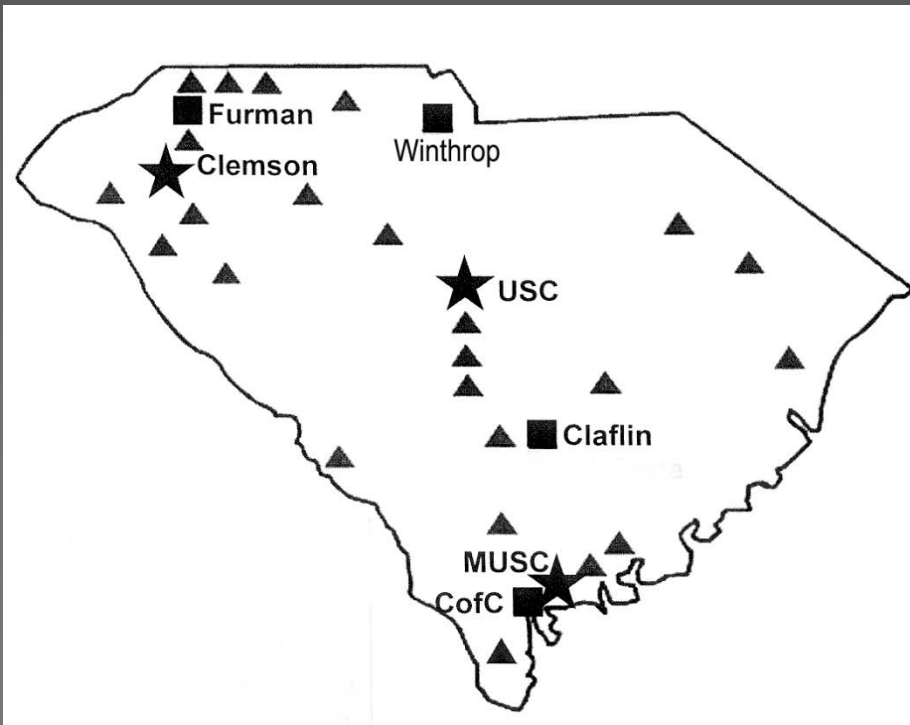


South Carolina Experimental Program to Stimulate Competitive Research and Institutional Development Awards



South Carolina INBRE

IDeA Networks of Biomedical Research Excellence

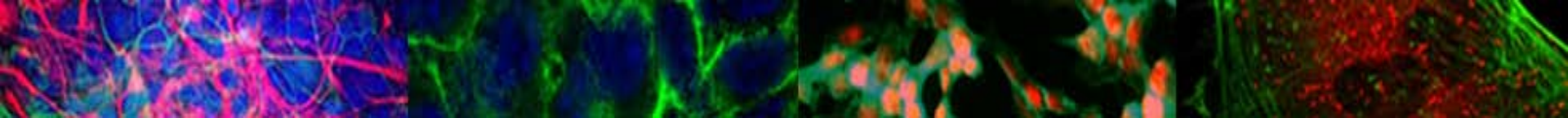


SC INBRE is a network of academic institutions across South Carolina, united in a collaborative effort to **develop our state's biomedical research infrastructure, establish effective collaborations among institutions, and enhance involvement of students in research**, with emphasis on recruitment and retention of underrepresented minorities.

SC EPSCoR/IDeA



South Carolina Experimental Program to Stimulate Competitive Research and Institutional Development Awards



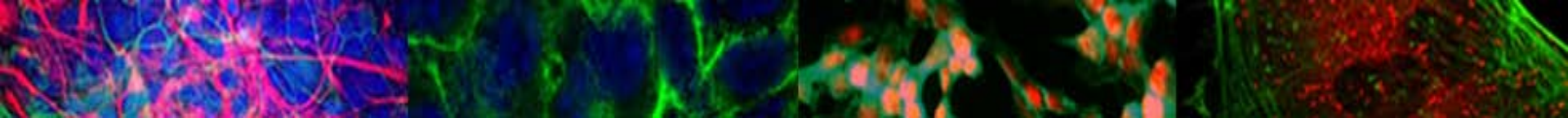
Current Specific Aims:

- Specific Aim 1: Development of Research Infrastructure in Regenerative Medicine at three Comprehensive Research Universities (CRU) through faculty recruitment, infrastructure development and outreach activities in the area of Regenerative Medicine.
- Specific Aim 2: Development of Research Infrastructure at four Predominantly Undergraduate Institutions (PUI).
- Specific Aim 3: Development of statewide research infrastructure through SC INBRE Core activities.

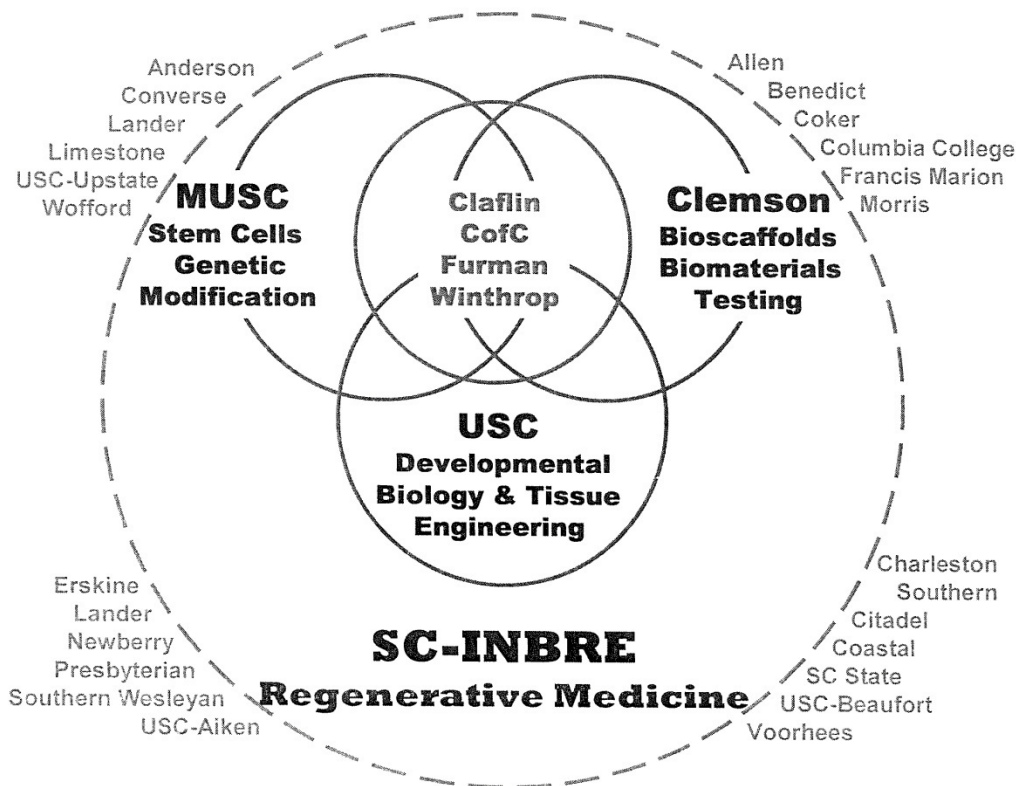
SC EPSCoR/IDeA



South Carolina Experimental Program to Stimulate Competitive Research and Institutional Development Awards



SC-INBRE RESEARCH PLAN



INBRE facts

\$ 17.3 M total costs

5 years of funding

7 Network Institutions:

3 Mentoring (CRUs)

4 Mentored (PUIs)

24 Outreach Institutions

3 Cores:

Administrative

BioT/Bio-Informatics

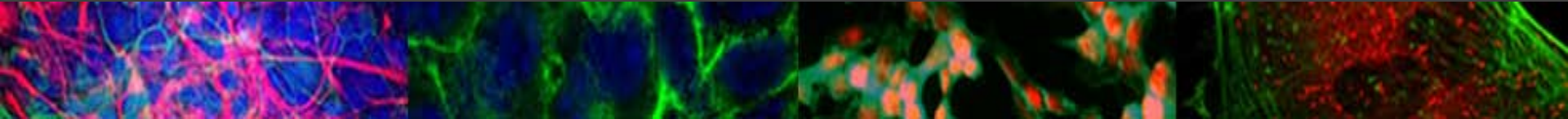
Outreach

**CRU Programs Theme:
Regenerative Medicine**

SC EPSCoR/IDeA

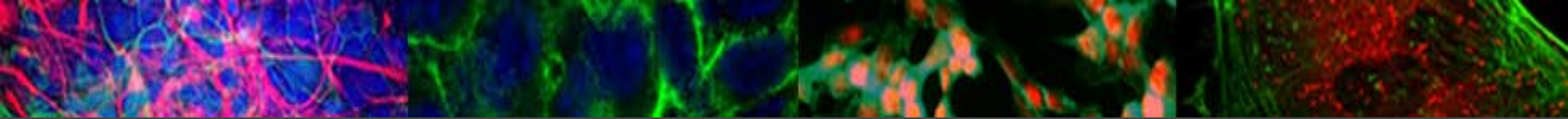


South Carolina Experimental Program to Stimulate Competitive Research and Institutional Development Awards



The application must include a scientific focus in **one or more thematic areas**, such as neuroscience, cancer, genomics, proteomics, developmental biology and genetics, toxicology or **any of the biomedical and behavioral scientific areas relevant to the mission of NIH**, and may include basic, clinical, and/or translational research approaches to attain the goals of the proposed network.

The broad thematic areas will **encourage and facilitate interactions and cross-collaborations among INBRE, COBRE and RCMI investigators and programs**; and will promote data and resource sharing within the statewide network and the region. It is also anticipated that, in some instances, support through this FOA will **facilitate the development of new disease-specific research networks or augment the capability of existing programs**.



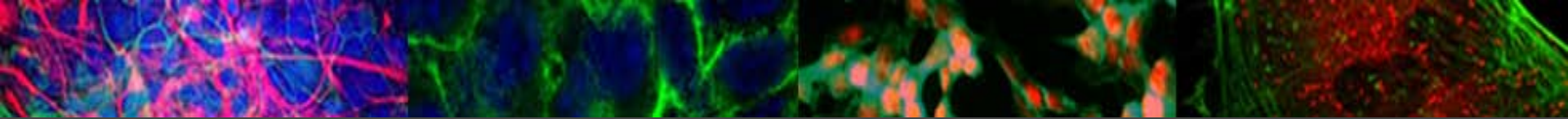
Bioengineering and Regenerative Medicine

- Biomaterials and biomedical engineering
- Development and regeneration
- Inflammation and repair
- Genomics of development, regeneration, inflammation, repair

SC EPSCoR/IDeA



South Carolina Experimental Program to Stimulate Competitive Research and Institutional Development Awards



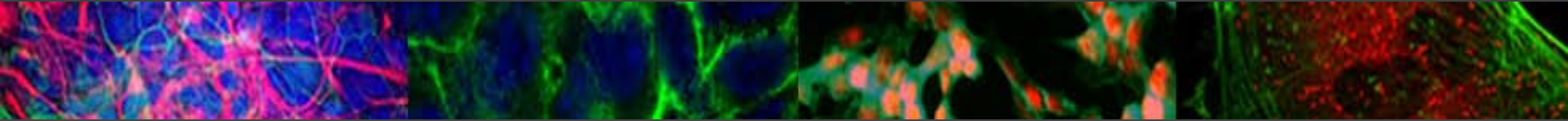
Other research areas of strength in current SC INBRE

- Cancer (USC, Claflin, Furman, Winthrop)
- Neurobiology, neuroscience (College of Charleston, Furman)

SC EPSCoR/IDeA



South Carolina Experimental Program to Stimulate Competitive Research and Institutional Development Awards



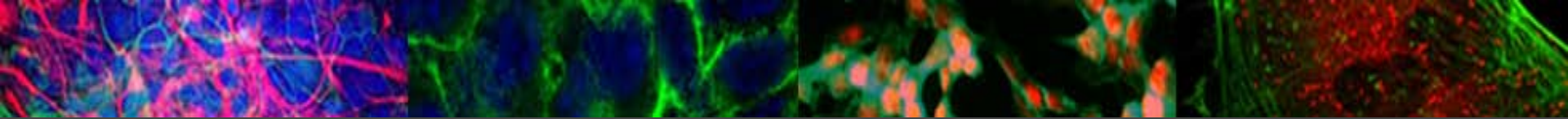
Proposed themes for 2009 application:

- Biomedical Engineering/Regenerative Medicine
- Health Disparities Research, focusing on diseases that are specific to SC (including cancer, diabetes, cardiovascular disease)
- Neuroscience/neurobiology

SC EPSCoR/IDeA



South Carolina Experimental Program to Stimulate Competitive Research and Institutional Development Awards



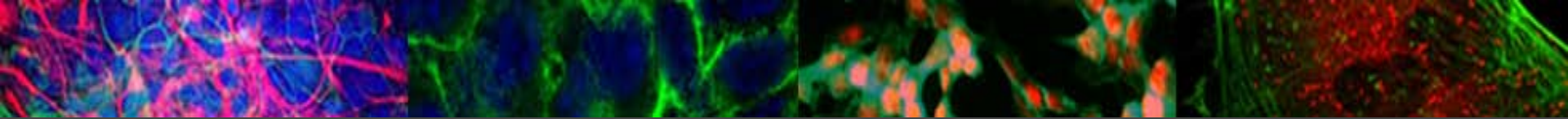
Why Health Disparities Research?

- Responsive to the needs of SC population
- Allows for the development of ties with COBREs in the state and with other well-established research program that INBRE could interface with
- Suited to basic science, translational and CBPR approaches

SC EPSCoR/IDeA

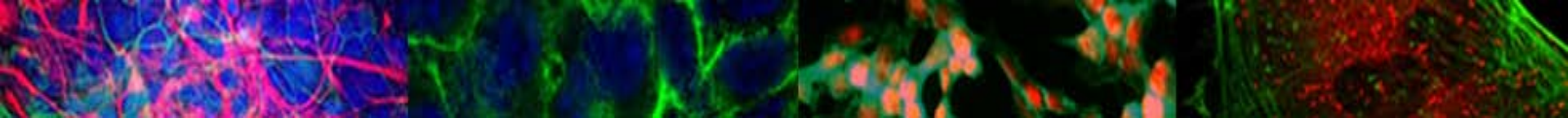


South Carolina Experimental Program to Stimulate Competitive Research and Institutional Development Awards



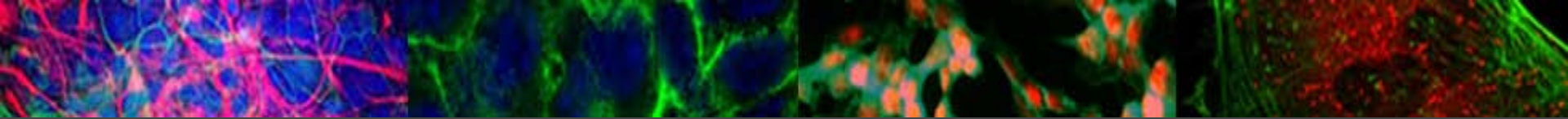
Possible common underlying threads:

- Genomics/Proteomics, Systems Biology
- Translational research
- Community-Based Participatory Research



Evolution of the Biotechnology/Bioinformatics Core (formerly, Bioinformatics)

- The BRIN Bio-I core: support to libraries, INBRE web site, training, software
- INBRE years 1,2: Training workshops around the state, a statewide Bioinformatics Symposium, a seminar series, and two workshops on microarray data analysis
- Core was reorganized to add **the capacity for genomics and proteomics service, including data analysis, as well as assistance with experimental design, preparation of grant proposals requiring Bioinformatics and Biotechnology expertise.**
- The idea is to integrate the Core with all active genomics and proteomics core facilities within the network
- The Core continues to provide solid training to faculty and students alike
- The Core issued a call for student-driven proposals using DNA microarray technologies: we received 38 proposals from around the state and funded 6
- The Core is organizing a major statewide symposium on Bioinformatics for the Spring, 2009



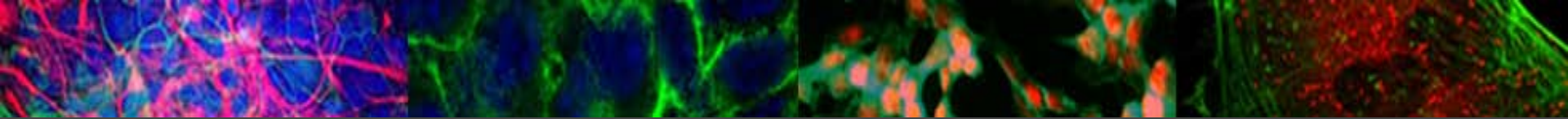
Principles that will inform the final selection of thematic areas in addition to Biomedical Engineering/Regenerative Medicine

- Strength of existing science
- Collaborative work, or potential for collaboration
- Suitability for research training of students
- Impact on students, community
- Likelihood of competitiveness for long-term funding

SC EPSCoR/IDeA



South Carolina Experimental Program to Stimulate Competitive Research and Institutional Development Awards



Ultimately, the landscape will be shaped by its components

We will consider the range and type of proposals submitted, and attempt to draft an organic picture

We will be happy to work with each institution and each faculty member to help in the development of specific programs that interface with others in the network

We strongly encourage collaborative, institution-wide or across institutions initiatives that foster both research and training, and make use of the cores



South Carolina Science, Technology and Health Conference

And 2009 Annual Meeting of the South Carolina Academy of Science

Columbia Metropolitan Convention Center,
Columbia, SC, April 14-16, 2009

<http://www.sthconference.com>



SC INBRE
IDEA Network of Biomedical
Research Excellence



Join us for three days of scientific presentations, job forums, workshops, poster sessions and symposia bringing together South Carolina scientists and students in a variety of disciplines, and a series of invited plenary lectures on topics of general interest. The Conference will include:



- The **Second SC INBRE Bioinformatics Symposium and Workshop** (April 14-15)
- The **Second SC Biomedical Engineering Summit and Symposium** (organized by SC INBRE and the SC Bioengineering Alliance, April 14-16, 2009)
- **Health Disparities in South Carolina** (organized by SC INBRE, the SCAS and the Institute for Partnerships to Eliminate Health Disparities, University of South Carolina, April 14-15, 2009)
- The **Annual Meeting of the SC Junior Academy of Science** (April 16, 2009)

Additional topics for mini-symposia: Cancer Research, Nanotechnology and Nanoscience, Molecular/Cell Biology and Genetics, Field Biology, Environmental Sciences, Chemistry, Physics/Astronomy. Each Symposium will consist of oral and poster sessions. In addition, several workshops and teachers' continuing education sessions are in the plans.

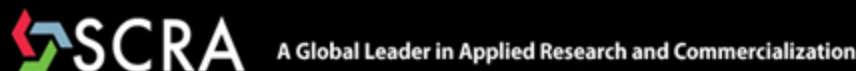
Invited keynote speakers include Dr. John Baynes, University of South Carolina; Dr. Brian Athey, University of Michigan, and other nationally and internationally recognized scientists.

Register early to take advantage of reduced registration fees:

- Until January 31, 2009: \$50.00 regular; \$15.00, student
- February 1 to March 31, 2009: \$75.00, regular; \$20.00, student
- April, 2009, and On-Site: \$100.00, regular; \$25.00, student
- SCJAS meeting only, April 16, 2009, middle- and high-school students: \$15.00

Deadline for abstract submission: Monday, February 16, 2009

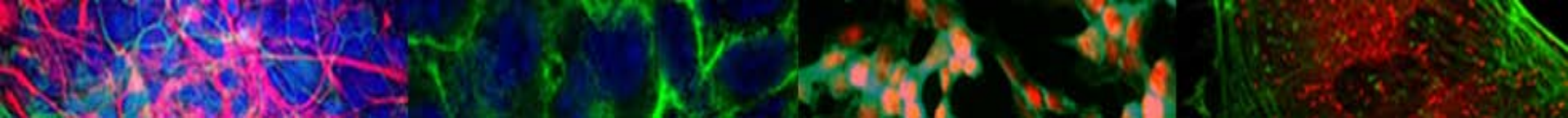
Register and submit your abstract online at www.sthconference.com



SC EPSCoR/IDeA



South Carolina Experimental Program to Stimulate Competitive Research and Institutional Development Awards



Goals for 2008-09

Submit the INBRE competitive renewal

Further encourage and facilitate access to genomics and proteomics by investigators and students within the network

Work with each institution to address the issue of sustainability:
continue to encourage and support applications for extramural funding

Organize and enhance efforts to increase diversity within the network

Conduct joint IDeA/SCAS symposium in April, 2009

Continue collaboration with SC Bioengineering Alliance